

QRS14

Applications

The QRS14 has a wide variety of applications:

- Platform Stabilization
- Short Term Navigation
- GPS Augmentation
- Camera Stabilization
- Instrumentation
- Ride Control Stabilization
- Wind Turbine Control



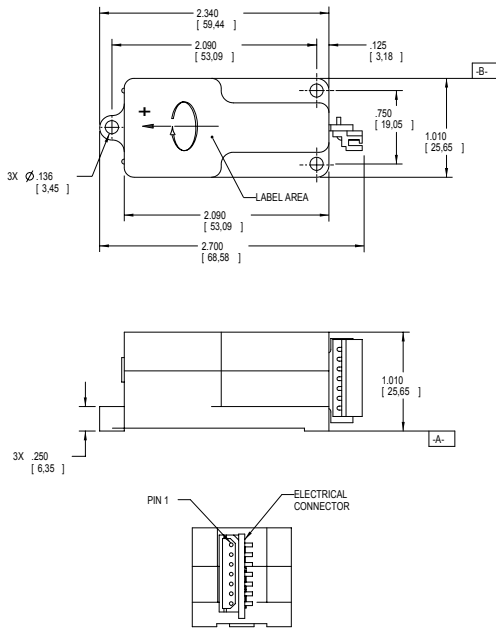
Description

The QRS14 is a compact, rugged, solid-state inertial sensor used to measure angular rotation rates. It features a monolithic quartz sensing element, internal power regulation and DC input/high-level DC output operation. Two versions are available. The +12 Vdc version features a high-level +1.0 to +4.0 Vdc output, and operation from standard battery power. The plus and minus 15 Vdc version provides a high-level bipolar output of ± 5 Vdc, and is designed for use with conventional double-sided power supplies.



Key Performance Features

- Solid State
- Compact, Lightweight Design
- Wide Temperature Range
- DC Input/High-Level DC Output
- Internal Power Regulation
- High Reliability
- Shock Resistant



Notes:

1. QRS14 is supplied with a mating connector (Molex P/N 5264-7 or Equiv.).
2. Angular rate applied as shown will produce a positive output.
3. Unit of measure is in inches/[mm].
4. Built-in-test activated by grounding Pin 7 causes an increase in rate output (Pin 5) of 0.5 Vdc nominal.
5. Built-in-test activated by grounding Pin 7 causes an increase in rate output (Pin 5) of 1.0 Vdc nominal.

QRS14-00XXX-102	
Connector Pin	Assignment
1	Power and Signal Ground
2	+Vdc Input
3	No connection, Leave Open
4	No connection, Leave Open
5	Rate Output
6	No Connection, Leave Open
7	Built-in-test (Note 4)

QRS14-00XXX-103	
Connector Pin	Assignment
1	-Vdc Input
2	+Vdc Input
3	Power Ground
4	Signal Ground
5	Rate Output
6	No Connection, Leave Open
7	Built-in-test (Note 5)

PARAMETER	SUMMARY SPECIFICATIONS	
PART NUMBER	QRS14-0XXXX-102**	QRS14-0XXXX-103**
Power Requirements		
Input Voltage	+9 to +18 Vdc	+ and - 9 to 18 Vdc
Input Current	<20 mA	<25 mA (each supply)
Performance		
Standard Ranges	±50, 100, 200, 500°/sec.	
Full Scale Output (Nominal)	+1.0 Vdc (-FS) to +4.0 Vdc (+FS)	±5 Vdc
Scale Factor Calibration (at 22°C Typical)	±2% of value	
Scale Factor over Temperature (Dev. from 22°C Typical)	≤0.06%/°C	
Bias Calibration (at 22°C Typical)	+2.5 ±0.045 Vdc	0.0 ±0.075 Vdc
Bias Variation over Temperature (Dev. from 22°C)	<3.0°/sec	
Short Term Bias Stability (100 sec at const. temp)	<0.05°/sec, typical	
Long Term Bias Stability (1 year)	≤1.0°/sec.	
G Sensitivity (Typical)	≤0.06°/sec/g	
Start-Up Time (Typical)	<2.0 sec	
Bandwidth (-90°)	>50 Hz	
Non-Linearity	≤0.05% of F.R.	
Threshold/Resolution	≤0.004°/sec.*	
Output Noise (DC to 100 Hz)	≤0.05°/sec./√Hz*	≤0.02°/sec./√Hz*
Environments		
Operating Temperature	-40°C to +85°C	
Storage Temperature	-55°C to +100°C	
Vibration Operating	5 g _{rms} 20 Hz to 2 kHz random	
Vibration Survival	10 g _{rms} 20 Hz to 2 kHz random 5 minutes/axis	
Shock	200g, any axis	
WEIGHT		
≤50 grams		
*Values indicated for ±100°/sec. range ** "XXXX" designates ± range		

For more information contact:

Systron Donner Inertial
 2700 Systron Drive
 Concord, California 94518 USA
 +1-925-979-4500 or +1-866-234-4976

Email: Sales@systron.com

